

# SEÑOR

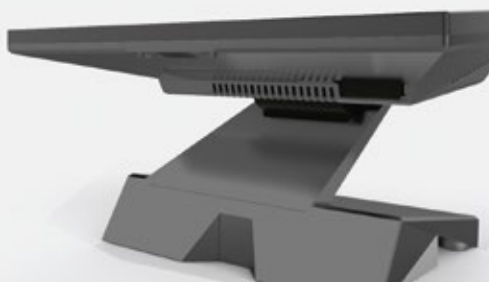


**V3**

Procesador j1900

**V5**

Procesador i3



Ángulo  
de giro de  
90°



Periféricos Modulares:  
MSR, i-button, IC-Card,  
fingerprint, RFID



Display secundario  
LCD  
10" / 15"



# V-3 & V-5 ESPECIFICACIONES

Specifications	V3	V5
Processor	Intel® Celeron J1900 Quad Core	Intel Core i3-6100U
System Memory	1*SO-DIMM, 4GB DDR4 2133, Max. 8GB	2*SO-DIMM, 8GB(4GB*2) DDR4 2133, Max. 32GB
Half Slim SSD	60GB	
Display	15" LED backlight TFT LCD, 1024*768, 250 or 350 cd/m <sup>2</sup>	
Touch Screen	PCT(Projected Capacitive Touch)	
Operation System	Win 7, POSReady 7, Win 10 IoT for Retail 64 bit	
<b>External I/O : Option 2 types</b>	<b>A type</b>	<b>B type</b>
LAN	2 Lan 10/100/1000 Mbps	1 Lan 10/100/1000 Mbps
VGA	N/A	1
USB	6*2.0 port	
Serial	2*DB-9, 1*RJ48	1*DB-9, 1*RJ48
Others	2*Built-in Speakers, 1*audio	
<b>Mechanical &amp; Environment</b>		
Dimensions & Weight	365.7(W)*193.1(D)*290.1(H) mm, 7.5 Kgs	
Safety Certifications & IP Rating	FCC/CE, IP 54 Compliance	
Storage & Operating Temp.	-20°C ~ 60°C, 0°C ~ 40°C	
Relative Humidity	10% ~ 90% (non-condensing)	
Power Consumption	60 W maximum	
<b>Peripheral Options</b>		
Wireless LAN	Integrated 802.11 b/g/n Wireless LAN	
Customer Display	SE/NOR AMON 10 or 15 Series	VFD 20*2 lines Display
Magnetic Card Reader	Single Track, Double Tracks, Triple Tracks	
Smart Card Reader	ISO-7816 compatible	
Identification Devices (choose 1)	RFID (ISO/IEC 14443A / 13.56 MHz / Mifare S50)	
	Fingerprint Reader	
	i-Button	

**DISTRIBUIDOR AUTORIZADO**